



GAT MONTHLY MEMBERSHIP PROGRESS REPORT

Results as of: 7/31/2023

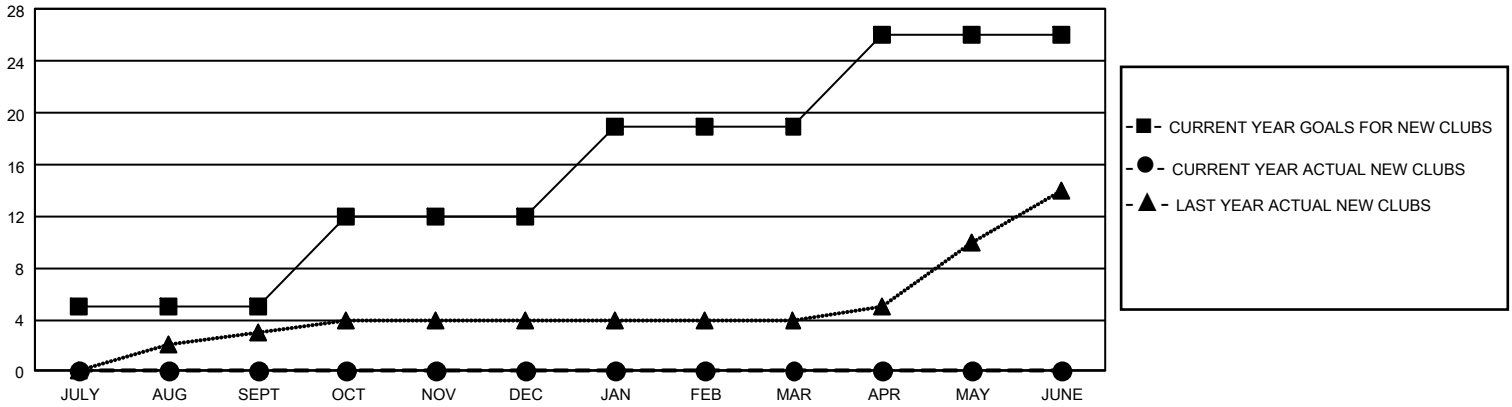
GMT Constitutional Area 3, Group E

REPORT DOES NOT INCLUDE CLUBS IN UNDISTRICTED AREAS.

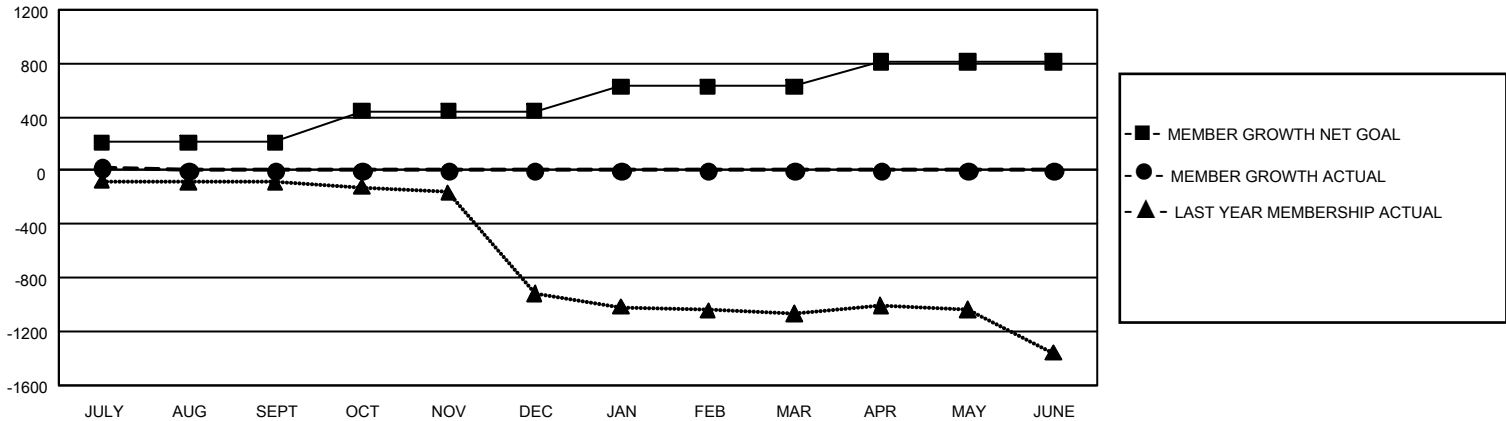
Clubs			
RESULTS FOR 2023-2024			
QUARTER	NEW CLUB GOAL	NEW CLUBS	DROPPED CLUBS
JULY/AUG/SEPT	15	0	3
OCT/NOV/DEC	21	0	0
JAN/FEB/MAR	21	0	0
APR/MAY/JUNE	21	0	0

Members			
RESULTS FOR 2023-2024			
QUARTER	MEMBER GROWTH NET GOAL	MEMBER GROWTH ACTUAL	DROPPED MEMBERS ACTUAL (including transfers)
JULY/AUG/SEPT	209	66	38
OCT/NOV/DEC	234	0	0
JAN/FEB/MAR	185	0	0
APR/MAY/JUNE	183	0	0

GOALS AND ACTUAL NEW CLUBS CUMULATIVE



GOALS AND ACTUAL MEMBERS CUMULATIVE



DROPPED CLUBS: 3 DROPPED MEMBERS DECEASED 3 CLUB CANCELLED 0 OTHER 35 TOTAL 38	28 CLUBS OF 334 ADDED 1 OR MORE NEW MEMBERS	GENDER DISTRIBUTION MALE 3,280 (44.94%) FEMALE 4,016 (55.02%) NON BINARY 1 (0.01%) PREFER NOT TO ANSWER 2 (0.03%)
	CLICK HERE FOR CUMULATIVE MEMBERSHIP DATA	TOTAL FAMILY UNIT MEMBERS 2,899 FAMILY MEMBERS PAYING HALF DUES 1,705